
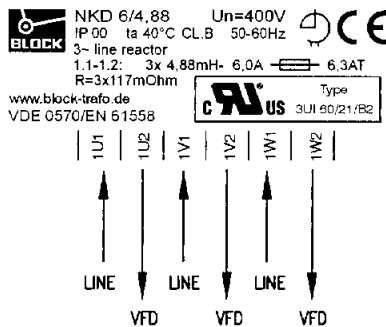


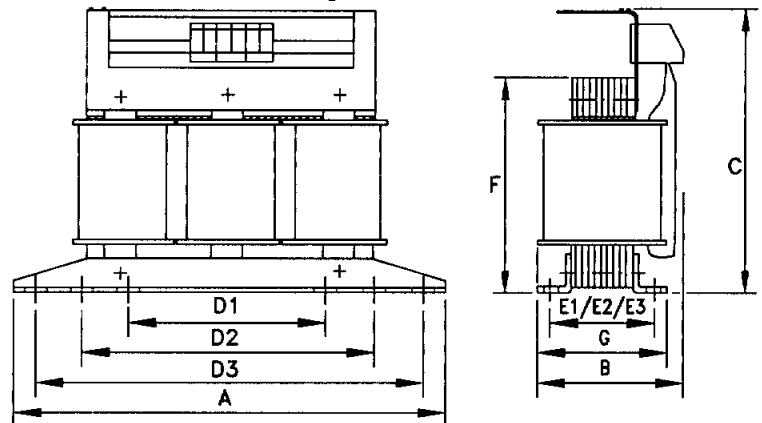
Type : 3~ Line reactor  
 BV – Nr. : NKD 6/4,88  
 Core type : 3UI 60/21  
 Rated current : 3x 6A  
 Inductivity at rated current : 3x 4,88mH  
 Rated frequency : 50–60Hz  
 Connection mode : III0  
 Safety class : prepared for class I equipment  
 Protection index : IP 00  
 Insulation class : B  
 Max. ambient temperaturer  
 ( in relation to rated core power ) : 40°C  
 Approvals :  **us**  
 Standard : VDE 0570 / EN 61 558 part 1 according to part 2–20,  
 UL506, CSA22.2  
 HV–Test voltage : Winding – Core: 4000V  
 Dimension mm (AxBxCxFxG) : 148 x 76 x 151 x 110 x 69  
 Mounting mm (D1/D2/D3/E1/E2/E3) : 90 / 100 / 136 / 39 / 45 / 49  
 Terminal connection : Screw–Terminals 4mm<sup>2</sup>  
 Terminal connection ( PE ) : M4 screw with wire holding plate  
 Notes : Technical specifications are typical,  
 they can vary due to material and production tolerances.

Grund/Art der Änderung	Name	Datum
a	Block-Logo updated	27.01.09

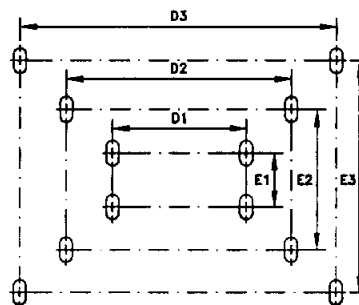
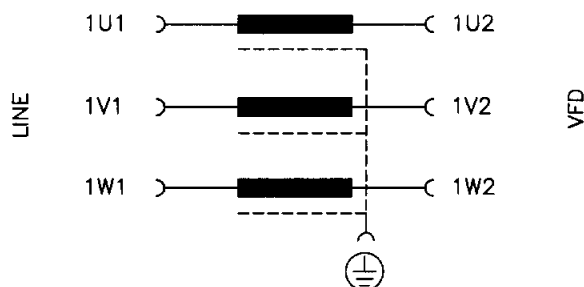
Marking:



Construction drawing:



Wiring diagram:



Mounting Dimensions

D1-E1 = Mounting to DIN 41308  
 D2-E2 = lengthened brackets  
 D3-E3 = mounting to DIN EN 60852-4