

Safety isolating transformer VR 30/1/15



Advantages

Minimum size at high output

Also with double output voltage for series or parallel connection

Permanent corrosion protection, high insulation value and maximum electrical reliability thanks to XtraDenseFill resin encapsulation

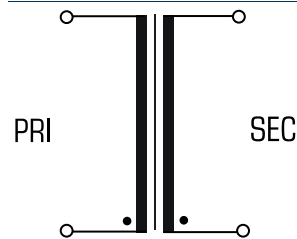
Self-extinguishing potting material

Space saving installation thanks to additional screw mounting in the base plate

Applications

Safety transformer for the safe electrical isolation of the input and output sides. The transformer is suitable for creating SELV and PELV circuits because of the limit on the output voltage.

Sample application



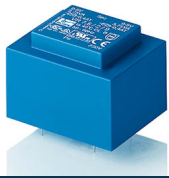
Standards

Safety isolating transformer
to: VDE 0570 Part 2-6, DIN EN 61558-2-6, EN 61558-2-6, IEC 61558-2-6,
UL 5085-1/-2, CSA 22.2 No.66

Approvals



VDE, UL 5085-1/-2, CSA 22.2 No.66

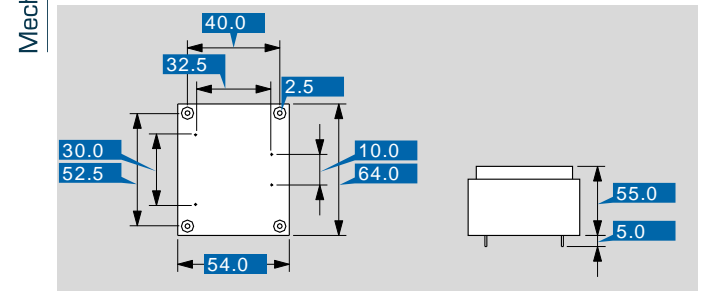


Safety isolating transformer

VR 30/1/15

Type		VR 30/1/15
Electrical data	Input	
	Rated input voltage	230 Vac
	Rated frequency	50 - 60 Hz
	Output	
	Rated output voltage	15 Vac
	Rated Power	30 VA
	No-load voltage (app. x factor)	1.11
	No-load loss (typ.)	2.50 W
	Efficiency	84.0 %
	Standards	
	Classification	Safety isolating transformer
	Approvals	
	Approvals	cURus, VDE
	Environment	
	Ambient temperature max.	40 °C
Safety and protection		
Type	Encapsulated	
Insulation class	VDE=B, UL=class 105	
Protection index	IP 00	
Safety class (prepared)	II	
Short circuit strength	non-short-circuit proof	
Order numbers		
Order Number	VR 30/1/15	

Type		VR 30/1/15
Terminal and mounting	Fixing method	Additional fixing by self-tapping screws
	Terminals	Pins for PCB
Measures and weights	Pin (ø)	0.8 mm
	Core type	EI 60/30,5
	Weight	0.78 kg



Subject to change.