

Mains transformer PT 22/2/24 - no longer available



Advantages

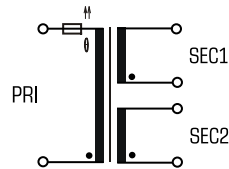
Minimum size at high output
Integrated overload protection using PTC in the input
Also with dual output voltage for series or parallel connection
Permanent corrosion protection, high insulation value and maximum electrical reliability thanks to XtraDenseFill resin encapsulation
Self-extinguishing potting material
Space saving installation thanks to additional screw mounting in the base plate

Applications

As a mains transformer for adjustment of the voltage and simple electrical isolation.

Safety transformer for the safe electrical isolation of the input and output sides. The transformer is suitable for creating SELV and PELV circuits because of the limit on the output voltage.

Sample application



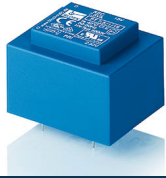
Standards

Mains transformer
to: VDE 0570 Teil 2-1, DIN EN 61558-2-1, EN 61558-2-1, IEC 61558-2-1

Approvals



UL 5085-1/-2, CSA 22.2 No.66

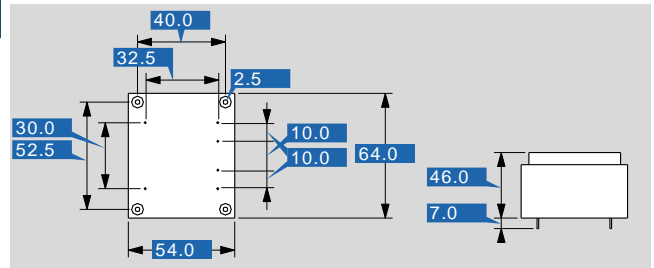


Mains transformer

PT 22/2/24 - no longer available

Type		PT 22/2/24 - no longer available
Electrical data	Input	
	Rated input voltage	230 Vac
	Rated frequency	50 - 60 Hz
	Output	
	Rated output voltage	2 x 18 Vac
	Rated Power	22 VA
	No-load voltage (app. x factor)	1.19
	No-load loss (typ.)	2.40 W
	Efficiency	77.0 %
	Standards	
	Classification	Mains transformer
	Approvals	
	Approvals	cURus, VDE
	Environment	
	Ambient temperature max.	40 °C
Safety and protection		
Type	Encapsulated	
Insulation class	VDE=E, UL=class 105	
Protection index	IP 00	
Safety class (prepared)	II	
Short circuit strength	non-inherently short-circuit proof	
Order numbers		
Order Number	PT 22/2/24 - no longer available	

Type		PT 22/2/24 - no longer available
Mechanical data	Terminal and mounting	
	Terminals	Pins for PCB
	Measures and weights	
Pin (ø)		0.8 mm
Core type		EI 60/21
Weight		0.57 kg



Subject to change.