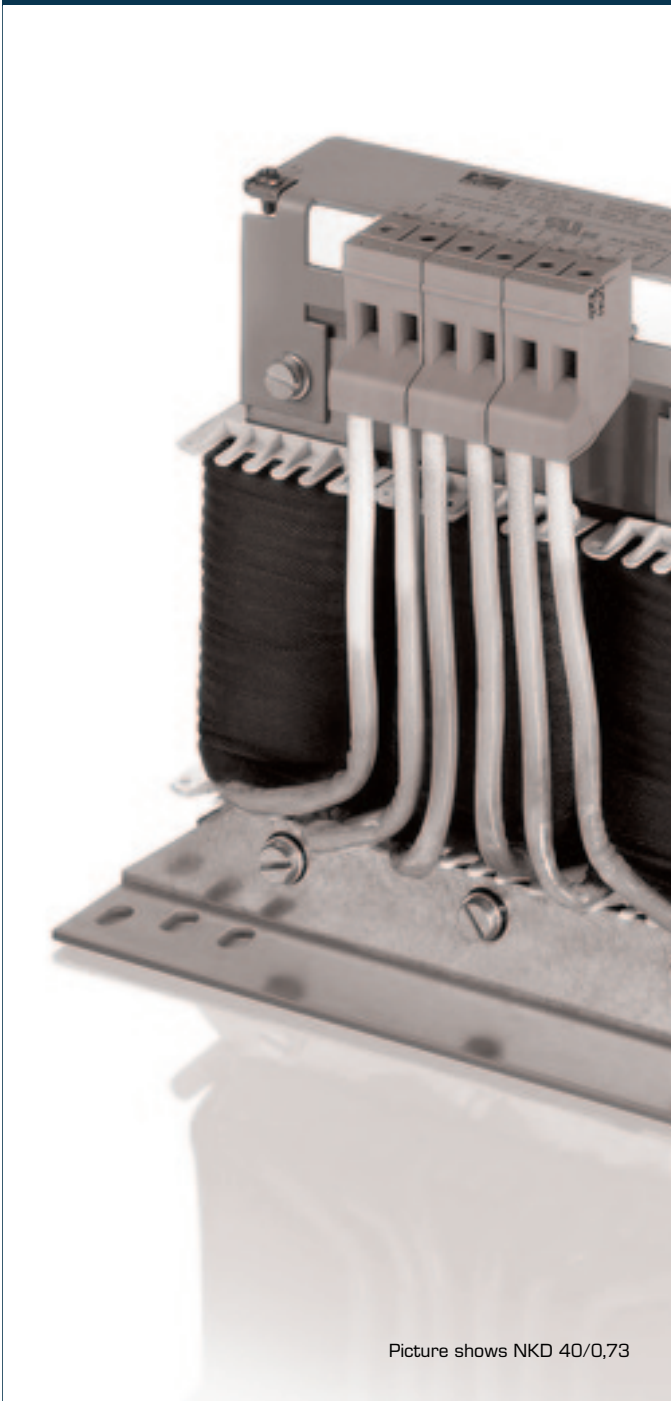


Line reactor, three-phase, 4 % (uK)DISCONTINUED MODEL
NKD 63/0,49 - no longer available

Applications

Line reactor to minimize mains pollution, to reduce the reactive-power components and charging currents in the DC link capacitor and to improve the $\cos(\phi)$.



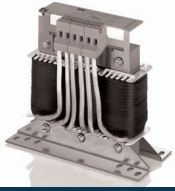
Picture shows NKD 40/0,73

Standards

Line- and commutation reactor to
DIN EN 61558-2-20, IEC 61558-2-20, UL 506, CSA 22.2

Approvals

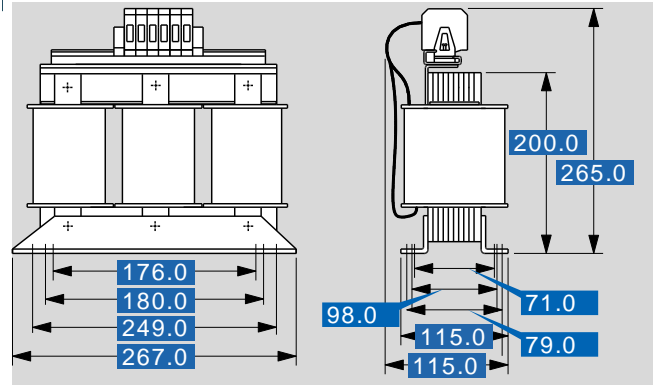
UL 506, CSA 22.2



Line reactor, three-phase, 4 % (uK)DISCONTINUED MODEL NKD 63/0,49 - no longer available

Type	NKD 63/0,49 - no longer available
Electrical data	
Magnetic characteristics	
Material	
Operating data	
Rated voltage	3 x 400 Vac
Rated voltage (IEC)	3 x 690 Vac
Rated voltage (UL)	3 x 600 Vac
Short circuit voltage uK	4 % @ 400 Vac
Voltage drop	9.2 Vac
Rated current	3 x 63 A
Rated frequency	50 - 60 Hz
Inductance	0.470 mH
Inductance deviation	±10 %
Approvals	
Approvals	cURus
Environment	
Ambient temperature	-10 °C to +40 °C
Type of cooling	AN
Safety and protection	
Insulation class	IEC=F, UL=class 155
Protection index	IP 00
Safety class (prepared)	I
Type	Open type
Safety class	
Test voltage	2500 Vac
Catalogue logic	
	Not for new designs Alternative type LR3 40-4/63
Order numbers	
Order Number	NKD 63/0,49 - no longer available

Type	NKD 63/0,49 - no longer available
Mechanical data	
Terminal and mounting	
Terminals phase	Screw clamp, 16 mm ²
Terminals PE	for 16 mm ²
Fixing method	Fixing rail
Fixing screws	M6
Measures and weights	
Weight	13.50 kg



Subject to change.