

# Safety isolating transformer

## FLD 6/18 Discontinued line - not for new designs



FLD 12/8

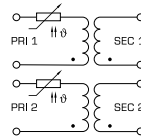
## Advantages

Minimum size at high output
Low height
Integrated overload protection using PTC in the input
Double input voltage for series or parallel connection
Double output voltage for series or parallel connection
Permanent corrosion protection, high insulation value and maximum electrical reliability thanks to XtraDenseFill resin encapsulation
Self-extinguishing potting material

## Applications

As a safety isolating transformer for the safe electrical isolation of the input and output sides. The transformer is suitable for creating SELV and PELV circuits because of the limit on the output voltage.

## Sample application



## Standards

Safety isolating transformer  
to: VDE 0570 Part 2-6, DIN EN 61558-2-6, EN 61558-2-6, IEC 61558-2-6

## Approvals



VDE (EN 61347)

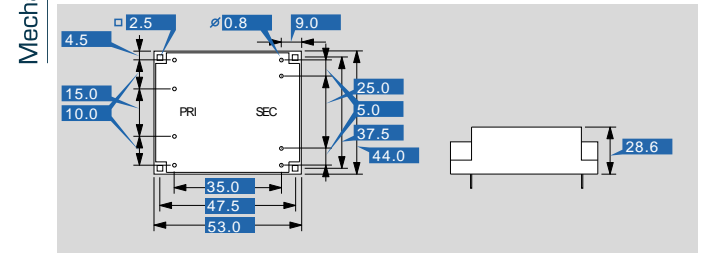


# Safety isolating transformer

## FLD 6/18 Discontinued line - not for new designs

Type	FLD 6/18 Discontinued line - not for new designs	
<b>Electrical data</b>	<b>Input</b>	
	Rated input voltage	2 x 115 Vac
	Rated frequency	50 - 60 Hz
	<b>Output</b>	
	Rated output voltage	2 x 18 Vac
	Rated Power	6 VA
	No-load voltage (app. x factor)	1.33
	No-load loss (typ.)	1.30 W
	Efficiency	72.0 %
	<b>Standards</b>	
	Classification	Safety isolating transformer
	<b>Approvals</b>	
	Approvals	VDE
	<b>Environment</b>	
	Ambient temperature max.	40 °C
<b>Safety and protection</b>		
Type	Encapsulated	
Insulation class	E	
Protection index	IP 00	
Safety class (prepared)	II	
Short circuit strength	non-inherently short-circuit proof	
<b>Order numbers</b>		
<b>Order Number</b>	<b>FLD 6/18 Discontinued line - not for new designs</b>	

Type	FLD 6/18 Discontinued line - not for new designs
<b>Terminal and mounting</b>	
Terminals	Pins for printed circuit boards
<b>Measures and weights</b>	
Core type	UI 30/16,5
Weight	0.25 kg



Subject to change.