

# Safety isolating transformer

## FLD 35/8 Discontinued line - not for new designs



FLD 12/8

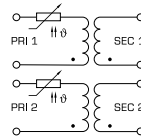
## Advantages

Minimum size at high output
Low height
Integrated overload protection using PTC in the input
Double input voltage for series or parallel connection
Double output voltage for series or parallel connection
Permanent corrosion protection, high insulation value and maximum electrical reliability thanks to XtraDenseFill resin encapsulation
Self-extinguishing potting material

## Applications

As a safety isolating transformer for the safe electrical isolation of the input and output sides. The transformer is suitable for creating SELV and PELV circuits because of the limit on the output voltage.

## Sample application



## Standards

Safety isolating transformer  
to: VDE 0570 Part 2-6, DIN EN 61558-2-6, EN 61558-2-6, IEC 61558-2-6

## Approvals



VDE (EN 61347)

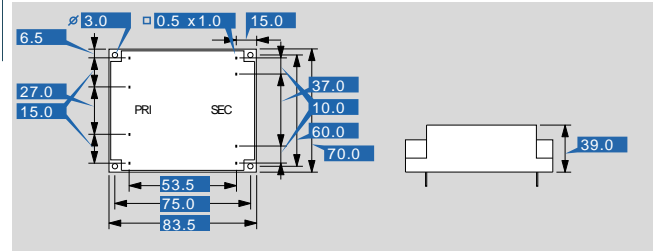


# Safety isolating transformer

## FLD 35/8 Discontinued line - not for new designs

Type	FLD 35/8 Discontinued line - not for new designs
<b>Electrical data</b>	
<b>Input</b>	
Rated input voltage	2 x 115 Vac
Rated frequency	50 - 60 Hz
<b>Output</b>	
Rated output voltage	2 x 8 Vac
Rated Power	35 VA
No-load voltage (app. x factor)	1.20
No-load loss (typ.)	3.20 W
Efficiency	78.0 %
<b>Standards</b>	
Classification	Safety isolating transformer
<b>Approvals</b>	
Approvals	VDE
<b>Environment</b>	
Ambient temperature max.	40 °C
<b>Safety and protection</b>	
Type	Encapsulated
Insulation class	E
Protection index	IP 00
Safety class (prepared)	II
Short circuit strength	non-inherently short-circuit proof
<b>Order numbers</b>	
<b>Order Number</b>	<b>FLD 35/8 Discontinued line - not for new designs</b>

Type	FLD 35/8 Discontinued line - not for new designs
<b>Mechanical data</b>	
Terminal and mounting	Pins for printed circuit boards
Measures and weights	
Core type	UI 48/17,0
Weight	0.74 kg



Subject to change.