

Safety isolating transformer

FLD 12/9 Discontinued line - not for new designs



FLD 12/8

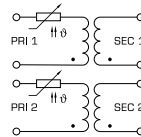
Advantages

Minimum size at high output
Low height
Integrated overload protection using PTC in the input
Double input voltage for series or parallel connection
Double output voltage for series or parallel connection
Permanent corrosion protection, high insulation value and maximum electrical reliability thanks to XtraDenseFill resin encapsulation
Self-extinguishing potting material

Applications

As a safety isolating transformer for the safe electrical isolation of the input and output sides. The transformer is suitable for creating SELV and PELV circuits because of the limit on the output voltage.

Sample application



Standards

Safety isolating transformer
to: VDE 0570 Part 2-6, DIN EN 61558-2-6, EN 61558-2-6, IEC 61558-2-6

Approvals



VDE (EN 61347)

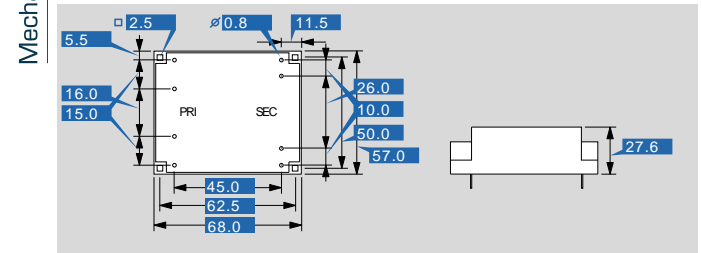


Safety isolating transformer

FLD 12/9 Discontinued line - not for new designs

Type		FLD 12/9 Discontinued line - not for new designs
Electrical data	Type	
	Input	
	Rated input voltage	2 x 115 Vac
	Rated frequency	50 - 60 Hz
	Output	
	Rated output voltage	2 x 9 Vac
	Rated Power	12 VA
	No-load voltage (app. x factor)	1.31
	No-load loss (typ.)	1.80 W
	Efficiency	73.0 %
	Standards	
	Classification	Safety isolating transformer
	Approvals	
	Approvals	VDE
	Environment	
	Ambient temperature max.	40 °C
	Safety and protection	
	Type	Encapsulated
Insulation class	E	
Protection index	IP 00	
Safety class (prepared)	II	
Short circuit strength	non-inherently short-circuit proof	
Order numbers		
Order Number	FLD 12/9 Discontinued line - not for new designs	

Type		FLD 12/9 Discontinued line - not for new designs
Terminal and mounting		
Terminals		Pins for printed circuit boards
Measures and weights		
Core type		UI 39/13,5
Weight		0.37 kg



Subject to change.