

Safety isolating transformer

FLD 12/6 Discontinued line - not for new designs



FLD 12/6

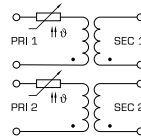
Advantages

Minimum size at high output
Low height
Integrated overload protection using PTC in the input
Double input voltage for series or parallel connection
Double output voltage for series or parallel connection
Permanent corrosion protection, high insulation value and maximum electrical reliability thanks to XtraDenseFill resin encapsulation
Self-extinguishing potting material

Applications

As a safety isolating transformer for the safe electrical isolation of the input and output sides. The transformer is suitable for creating SELV and PELV circuits because of the limit on the output voltage.

Sample application



Standards

Safety isolating transformer
to: VDE 0570 Part 2-6, DIN EN 61558-2-6, EN 61558-2-6, IEC 61558-2-6

Approvals



VDE (EN 61347)

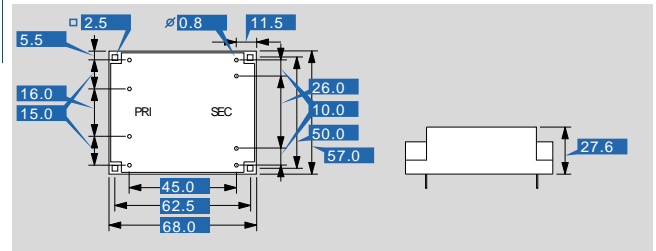


Safety isolating transformer

FLD 12/6 Discontinued line - not for new designs

Type	FLD 12/6 Discontinued line - not for new designs
Electrical data	
Input	
Rated input voltage	2 x 115 Vac
Rated frequency	50 - 60 Hz
Output	
Rated output voltage	2 x 6 Vac
Rated Power	12 VA
No-load voltage (app. x factor)	1.31
No-load loss (typ.)	1.80 W
Efficiency	73.0 %
Standards	
Classification	Safety isolating transformer
Approvals	
Approvals	VDE
Environment	
Ambient temperature max.	40 °C
Safety and protection	
Type	Encapsulated
Insulation class	E
Protection index	IP 00
Safety class (prepared)	II
Short circuit strength	non-inherently short-circuit proof
Order numbers	
Order Number	FLD 12/6 Discontinued line - not for new designs

Type	FLD 12/6 Discontinued line - not for new designs
Mechanical data	
Terminal and mounting	Pins for printed circuit boards
Measures and weights	
Core type	UI 39/13,5
Weight	0.37 kg



Subject to change.