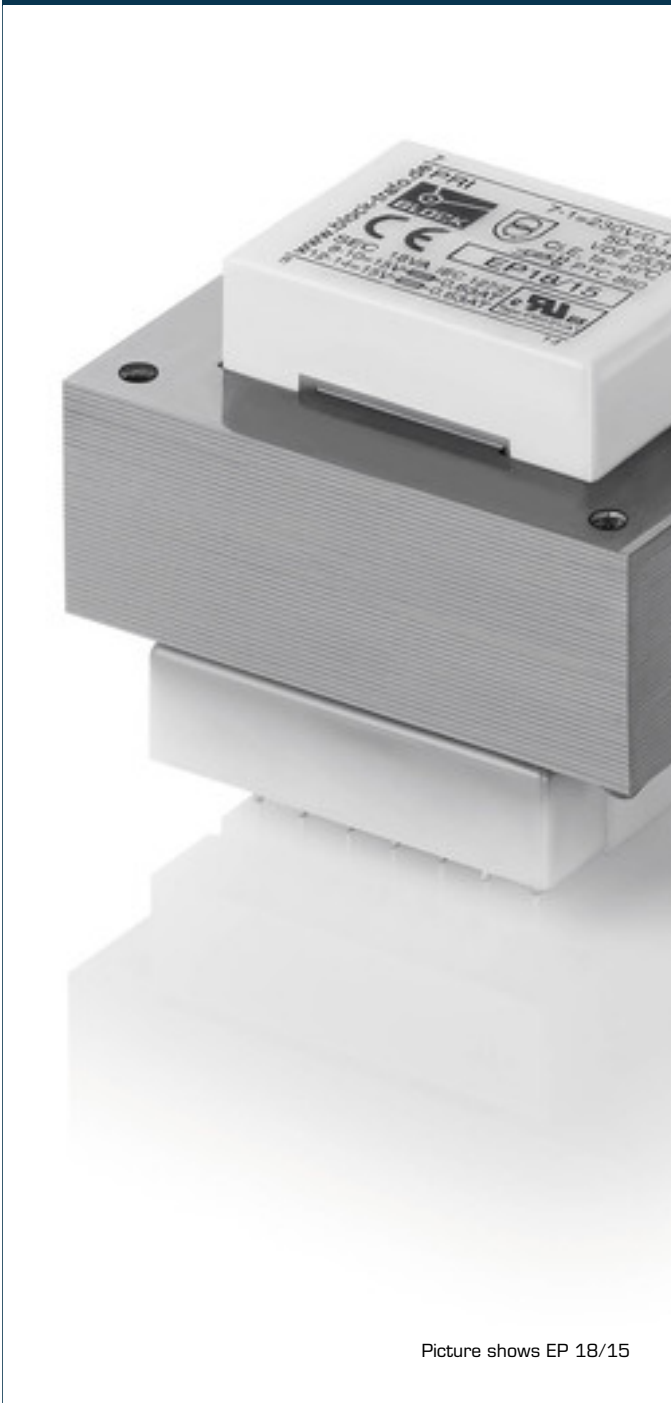


Safety isolating transformer

EP 18/12 Discontinued line - not for new designs



Picture shows EP 18/15

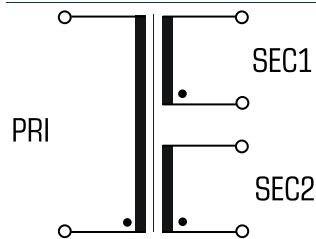
Advantages

- Minimum size at high output
- Double output voltage for series or parallel connection
- Very good moisture protection and low noise thanks to vacuum impregnation
- Contact protected on the circuit board thanks to covered solder pin strips
- Stable connection technology with injected round wire soldering pins
- Additional mounting option with holes in the core

Applications

Safety isolating transformer for the safe electrical isolation of the input and output sides. The transformer is suitable for creating SELV and PELV circuits because of the limit on the output voltage.

Sample application



Standards

Safety isolating transformer
to: VDE 0570 Part 2-6, DIN EN 61558-2-6, EN 61558-2-6, IEC 61558-2-6

Approvals



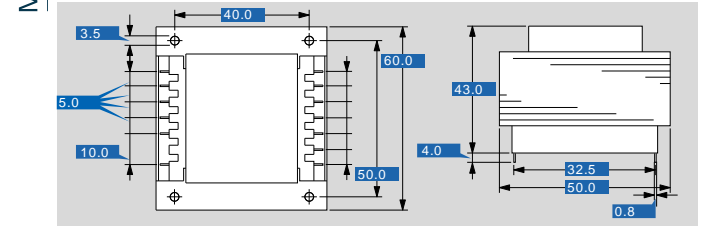


Safety isolating transformer

EP 18/12 Discontinued line - not for new designs

| Type | | EP 18/12 Discontinued line - not for new designs |
|-------------------------|---|--|
| Electrical data | Input | |
| | Rated input voltage | 230 Vac |
| | Rated frequency | 50 - 60 Hz |
| | Output | |
| | Rated output voltage | 2 x 12 Vac |
| | Rated Power | 18 VA |
| | No-load voltage (app. x factor) | 1.16 |
| | No-load loss (typ.) | 2.70 W |
| | Efficiency | 72.0 % |
| | Standards | |
| | Classification | Safety isolating transformer |
| | Environment | |
| | Ambient temperature max. | 40 °C |
| | Safety and protection | |
| | Type | Open type |
| Insulation class | E | |
| Protection index | IP 00 | |
| Safety class (prepared) | II | |
| Short circuit strength | non-short-circuit proof | |
| Overload protection | Typ PTC 860 (Accessory - available on request) | |
| Order numbers | | |
| Order Number | EP 18/12 Discontinued line - not for new designs | |

| Type | | EP 18/12 Discontinued line - not for new designs |
|-----------------------|---------------|--|
| Terminal and mounting | Fixing method | Holes in the core package |
| | Terminals | Pins for PCB |
| Measures and weights | | |
| Width | | 60.0 mm |
| Core type | | EI 60/21 |
| Weight | | 0.48 kg |



Subject to change.