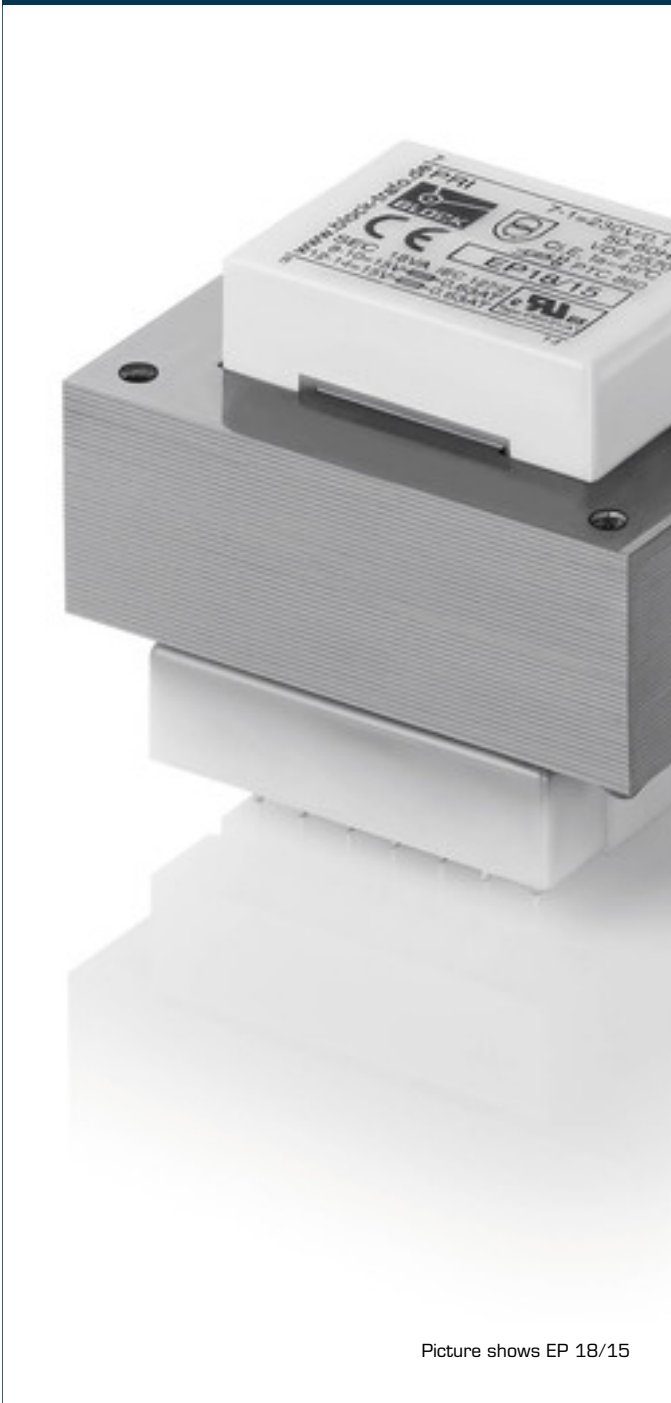


Safety isolating transformer

EP 13/12 Discontinued line - not for new designs



Picture shows EP 18/15

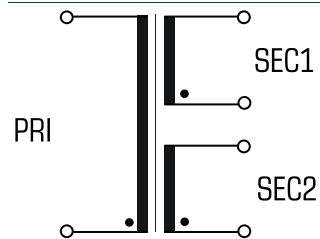
Advantages

- Minimum size at high output
- Double output voltage for series or parallel connection
- Very good moisture protection and low noise thanks to vacuum impregnation
- Contact protected on the circuit board thanks to covered solder pin strips
- Stable connection technology with injected round wire soldering pins
- Additional mounting option with holes in the core

Applications

Safety isolating transformer for the safe electrical isolation of the input and output sides. The transformer is suitable for creating SELV and PELV circuits because of the limit on the output voltage.

Sample application



Standards

Safety isolating transformer
to: VDE 0570 Part 2-6, DIN EN 61558-2-6, EN 61558-2-6, IEC 61558-2-6

Approvals



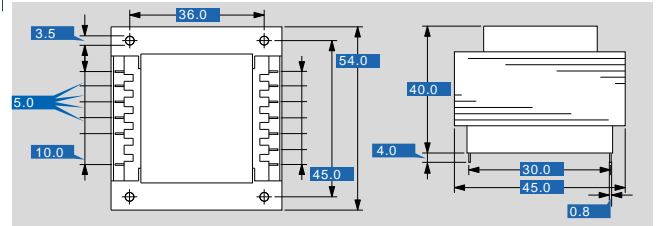


Safety isolating transformer

EP 13/12 Discontinued line - not for new designs

Type		EP 13/12 Discontinued line - not for new designs
Electrical data	Input	
	Rated input voltage	230 Vac
	Rated frequency	50 - 60 Hz
	Output	
	Rated output voltage	2 x 12 Vac
	Rated Power	13 VA
	No-load voltage (app. x factor)	1.28
	No-load loss (typ.)	2.20 W
	Efficiency	67.0 %
	Standards	
	Classification	Safety isolating transformer
	Environment	
	Ambient temperature max.	40 °C
	Safety and protection	
	Type	Open type
Insulation class	E	
Protection index	IP 00	
Safety class (prepared)	II	
Short circuit strength	non-short-circuit proof	
Overload protection	Typ PTC 872 (Accessory - available on request)	
Order numbers		
Order Number	EP 13/12 Discontinued line - not for new designs	

Type		EP 13/12 Discontinued line - not for new designs
Mechanical data	Terminal and mounting	
	Fixing method	Holes in the core package
	Terminals	Pins for PCB
	Measures and weights	
	Width	54.0 mm
	Core type	EI 54/18,8
	Weight	0.35 kg



Subject to change.