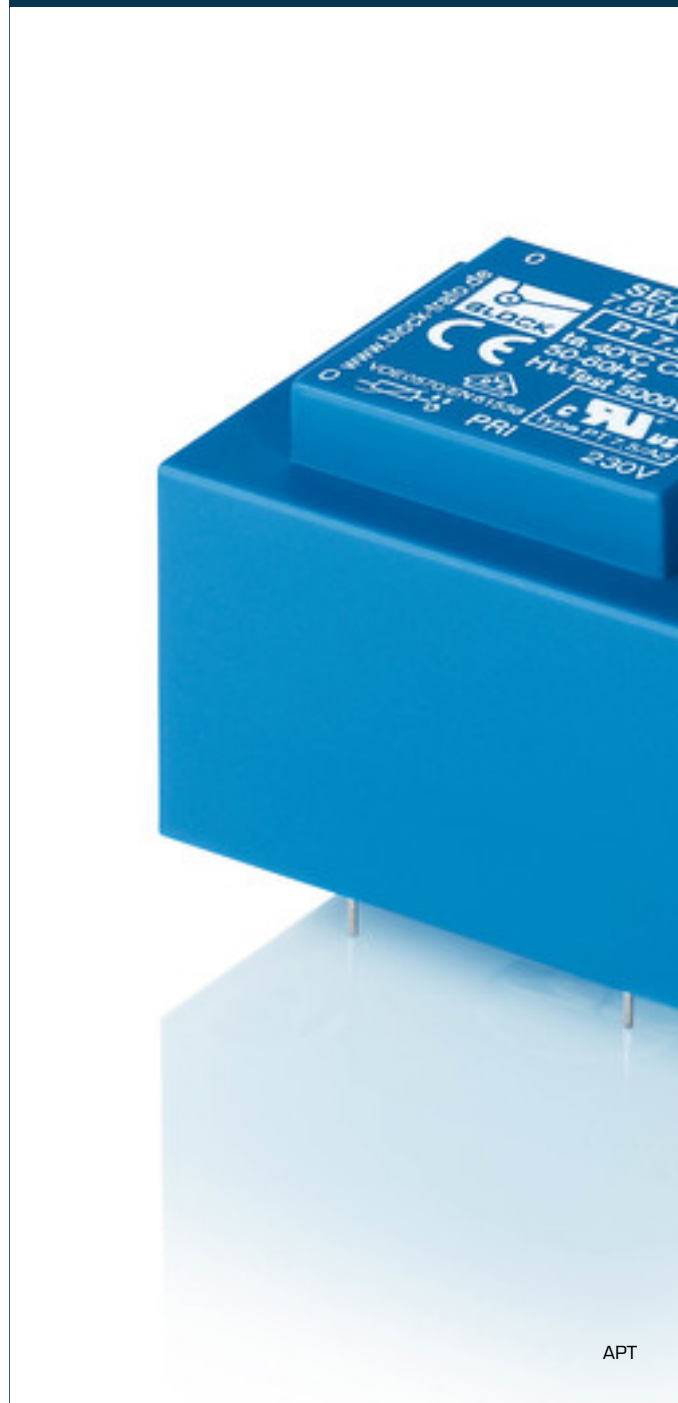


Safety isolating transformer APT 4,5/2/9 - no longer available



Advantages

Minimum size at high output

Integrated overload protection using PTC in the input

Permanent corrosion protection, high insulation value and maximum electrical reliability thanks to XtraDenseFill resin encapsulation

Self-extinguishing potting material

Space saving installation thanks to additional screw mounting in the base plate

Applications

As a safety transformer for the safe electrical isolation of the input and output sides. The transformer is suitable for creating SELV and PELV circuits because of the limit on the output voltage.

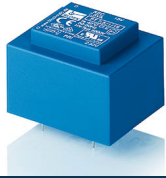
Standards

Safety isolating transformer
to: VDE 0570 Part 2-6, DIN EN 61558-2-6, EN 61558-2-6, IEC 61558-2-6,
UL 5085-1/-2, CSA 22.2 No.66

Approvals



VDE, UL 5085-1/-2, CSA 22.2 No.66



Safety isolating transformer APT 4,5/2/9 - no longer available

Electrical data		Type	Mechanical data		
Type		APT 4,5/2/9 - no longer available		Type	APT 4,5/2/9 - no longer available
Input				Terminal and mounting	
Rated input voltage	115 Vac			Terminals	Pins for printed circuit boards
Rated frequency	50 - 60 Hz			Measures and weights	
Output				Dimension (W x H x D)	37 x 33 x 44 mm
Rated output voltage	2 x 9 Vac			Pin (ø)	0.8 mm
Rated Power	4.5 VA			Core type	EI 42/14,8
No-load voltage (app. x factor)	1.32			Weight	0.19 kg
No-load loss (typ.)	1.50 W				
Efficiency	65.0 %				
Standards					
Classification	Safety isolating transformer				
Approvals					
Approvals	cURus, VDE				
Environment					
Ambient temperature max.	40 °C				
Safety and protection					
Type	Encapsulated				
Insulation class	VDE=B, UL=class 105				
Protection index	IP 00				
Safety class (prepared)	II				
Short circuit strength	non-inherently short-circuit proof				
Order numbers					
Order Number	APT 4,5/2/9 - no longer available				

Subject to change.