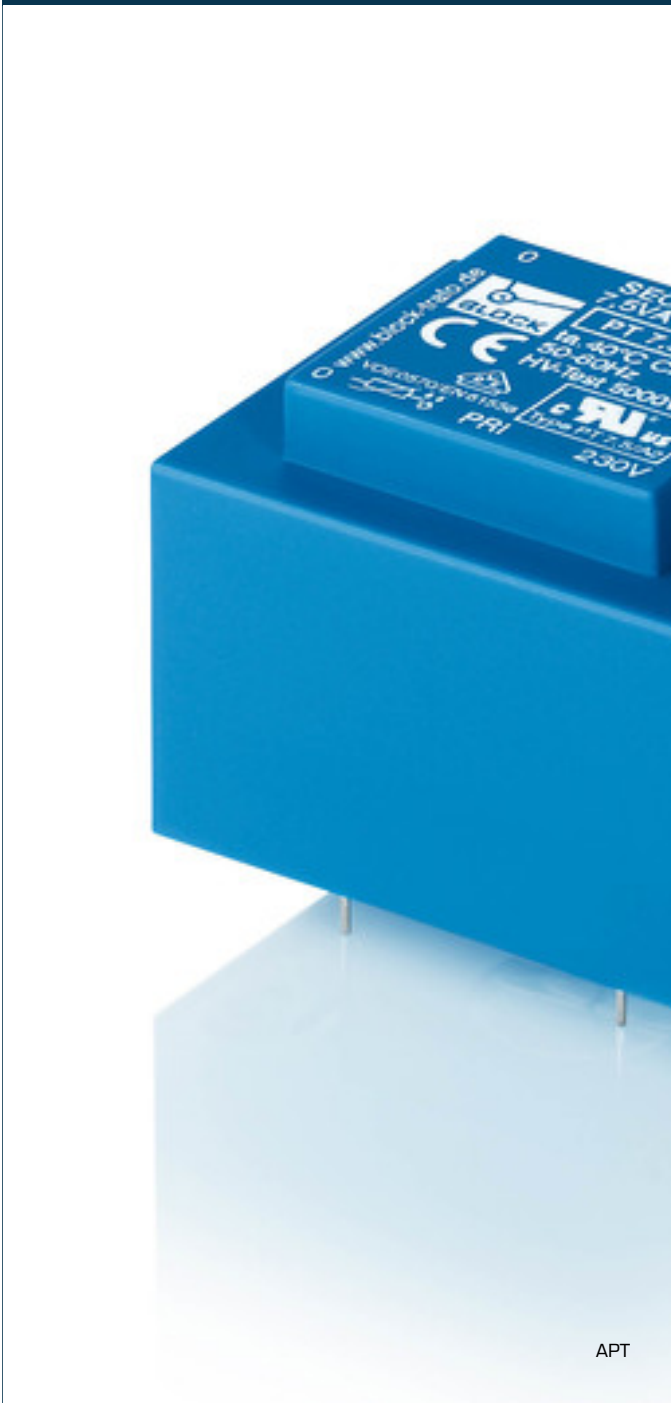


## Safety isolating transformer **APT 4,5/2/15 - no longer available**



### Advantages

Minimum size at high output

Integrated overload protection using PTC in the input

Permanent corrosion protection, high insulation value and maximum electrical reliability thanks to XtraDenseFill resin encapsulation

Self-extinguishing potting material

Space saving installation thanks to additional screw mounting in the base plate

### Applications

As a safety transformer for the safe electrical isolation of the input and output sides. The transformer is suitable for creating SELV and PELV circuits because of the limit on the output voltage.

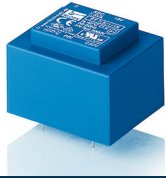
### Standards

Safety isolating transformer  
to: VDE 0570 Part 2-6, DIN EN 61558-2-6, EN 61558-2-6, IEC 61558-2-6,  
UL 5085-1/-2, CSA 22.2 No.66

### Approvals



VDE, UL 5085-1/-2, CSA 22.2 No.66



## Safety isolating transformer APT 4,5/2/15 - no longer available

Electrical data		Type	Mechanical data	
Type		APT 4,5/2/15 - no longer available	Type	
Input			Terminal and mounting	
Rated input voltage	115 Vac		Terminals	Pins for printed circuit boards
Rated frequency	50 - 60 Hz		Measures and weights	
Output			Dimension (W x H x D)	37 x 33 x 44 mm
Rated output voltage	2 x 15 Vac		Pin (ø)	0.8 mm
Rated Power	4.5 VA		Core type	EI 42/14,8
No-load voltage (app. x factor)	1.32		Weight	0.19 kg
No-load loss (typ.)	1.50 W			
Efficiency	65.0 %			
Standards				
Classification	Safety isolating transformer			
Approvals				
Approvals	cURus, VDE			
Environment				
Ambient temperature max.	40 °C			
Safety and protection				
Type	Encapsulated			
Insulation class	VDE=B, UL=class 105			
Protection index	IP 00			
Safety class (prepared)	II			
Short circuit strength	non-inherently short-circuit proof			
Order numbers				
Order Number	APT 4,5/2/15 - no longer available			