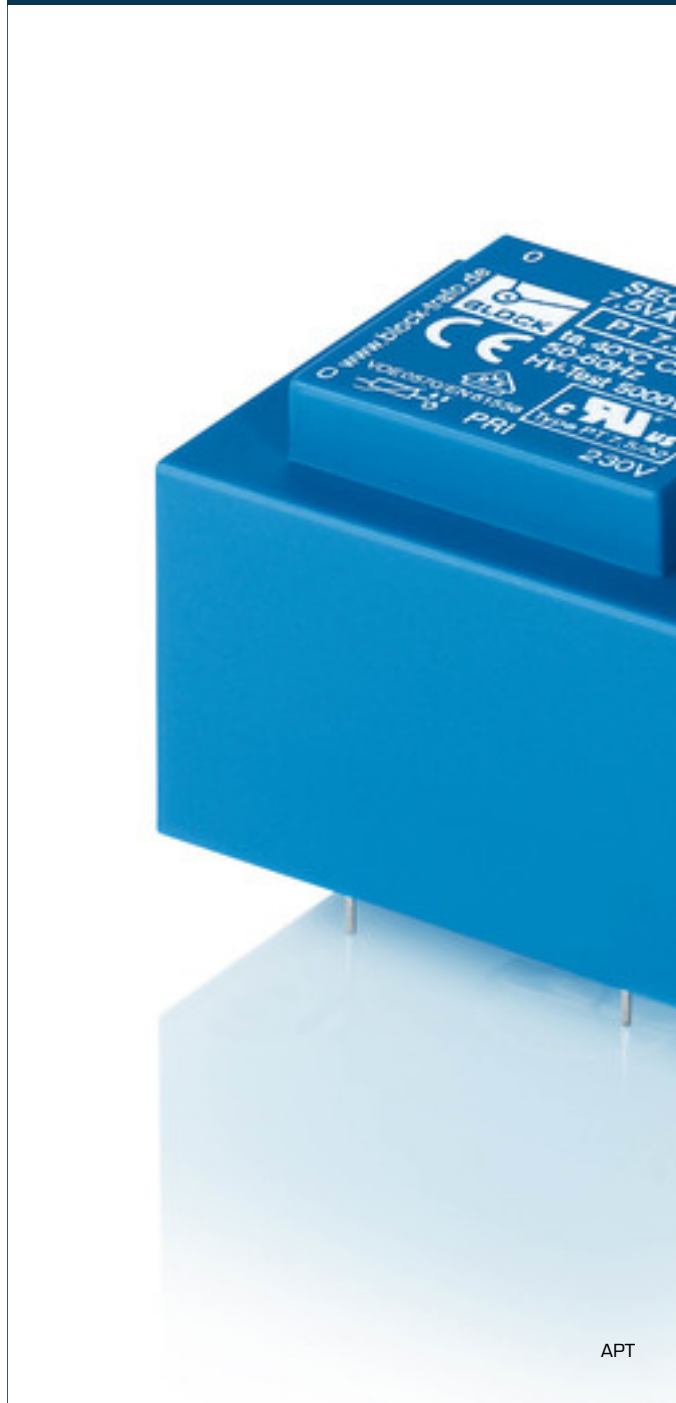


Safety isolating transformer

APT 30/2/18 - no longer available



Advantages

Minimum size at high output

Integrated overload protection using PTC in the input

Permanent corrosion protection, high insulation value and maximum electrical reliability thanks to XtraDenseFill resin encapsulation

Self-extinguishing potting material

Space saving installation thanks to additional screw mounting in the base plate

Applications

As a safety transformer for the safe electrical isolation of the input and output sides. The transformer is suitable for creating SELV and PELV circuits because of the limit on the output voltage.

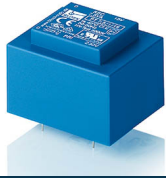
Standards

Safety isolating transformer
to: VDE 0570 Part 2-6, DIN EN 61558-2-6, EN 61558-2-6, IEC 61558-2-6,
UL 5085-1/-2, CSA 22.2 No.66

Approvals



VDE, UL 5085-1/-2, CSA 22.2 No.66



Safety isolating transformer APT 30/2/18 - no longer available

| Type | | APT 30/2/18 - no longer available |
|-------------------------|------------------------------------|-----------------------------------|
| Electrical data | Input | |
| | Rated input voltage | 115 Vac |
| | Rated frequency | 50 - 60 Hz |
| | Output | |
| | Rated output voltage | 2 x 18 Vac |
| | Rated Power | 30 VA |
| | No-load voltage (app. x factor) | 1.13 |
| | No-load loss (typ.) | 2.30 W |
| | Efficiency | 83.0 % |
| | Standards | |
| | Classification | Safety isolating transformer |
| | Approvals | |
| | Approvals | cURus, VDE |
| | Environment | |
| | Ambient temperature max. | 40 °C |
| | Safety and protection | |
| | Type | Encapsulated |
| Insulation class | VDE=B, UL=class 105 | |
| Protection index | IP 00 | |
| Safety class (prepared) | II | |
| Short circuit strength | non-inherently short-circuit proof | |
| Order numbers | | |
| Order Number | APT 30/2/18 - no longer available | |

| Type | | APT 30/2/18 - no longer available |
|-----------------|-----------------------|-----------------------------------|
| Mechanical data | Terminal and mounting | |
| | Terminals | Pins for printed circuit boards |
| | Measures and weights | |
| | Dimension (W x H x D) | 54 x 60 x 64 mm |
| | Pin (ø) | 0.8 mm |
| | Core type | EI 60/30,5 |
| | Weight | 0.78 kg |