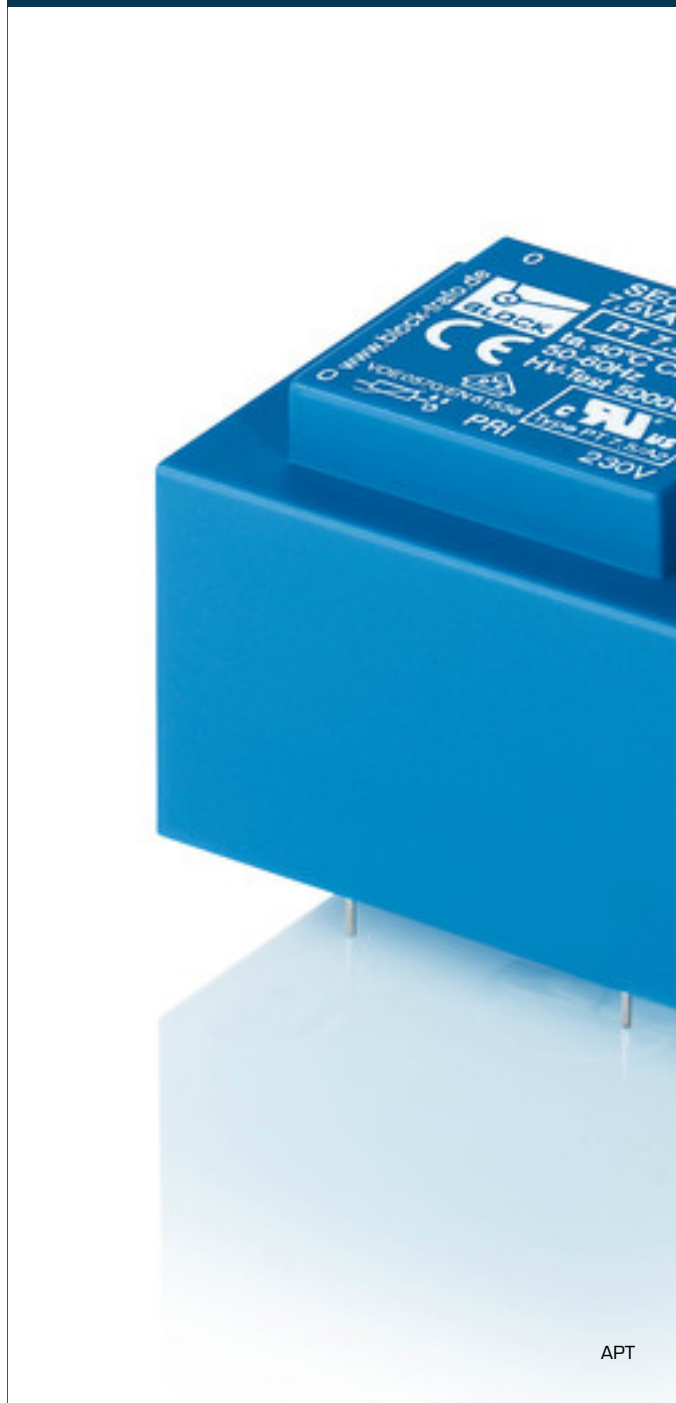


## Safety isolating transformer **APT 30/2/15 - no longer available**



### Advantages

Minimum size at high output

Integrated overload protection using PTC in the input

Permanent corrosion protection, high insulation value and maximum electrical reliability thanks to XtraDenseFill resin encapsulation

Self-extinguishing potting material

Space saving installation thanks to additional screw mounting in the base plate

### Applications

As a safety transformer for the safe electrical isolation of the input and output sides. The transformer is suitable for creating SELV and PELV circuits because of the limit on the output voltage.

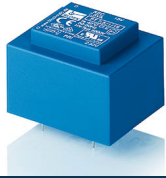
### Standards

Safety isolating transformer  
to: VDE 0570 Part 2-6, DIN EN 61558-2-6, EN 61558-2-6, IEC 61558-2-6,  
UL 5085-1/-2, CSA 22.2 No.66

### Approvals



VDE, UL 5085-1/-2, CSA 22.2 No.66



## Safety isolating transformer APT 30/2/15 - no longer available

Type		APT 30/2/15 - no longer available
Electrical data	Input	
	Rated input voltage	115 Vac
	Rated frequency	50 - 60 Hz
	Output	
	Rated output voltage	2 x 15 Vac
	Rated Power	30 VA
	No-load voltage (app. x factor)	1.13
	No-load loss (typ.)	2.30 W
	Efficiency	83.0 %
	Standards	
	Classification	Safety isolating transformer
	Approvals	
	Approvals	cURus, VDE
	Environment	
	Ambient temperature max.	40 °C
	Safety and protection	
	Type	Encapsulated
Insulation class	VDE=B, UL=class 105	
Protection index	IP 00	
Safety class (prepared)	II	
Short circuit strength	non-inherently short-circuit proof	
Order numbers		
Order Number	APT 30/2/15 - no longer available	

Type		APT 30/2/15 - no longer available
Mechanical data	Terminal and mounting	
	Terminals	Pins for printed circuit boards
	Measures and weights	
	Dimension (W x H x D)	54 x 60 x 64 mm
	Pin (ø)	0.8 mm
	Core type	EI 60/30,5
	Weight	0.78 kg