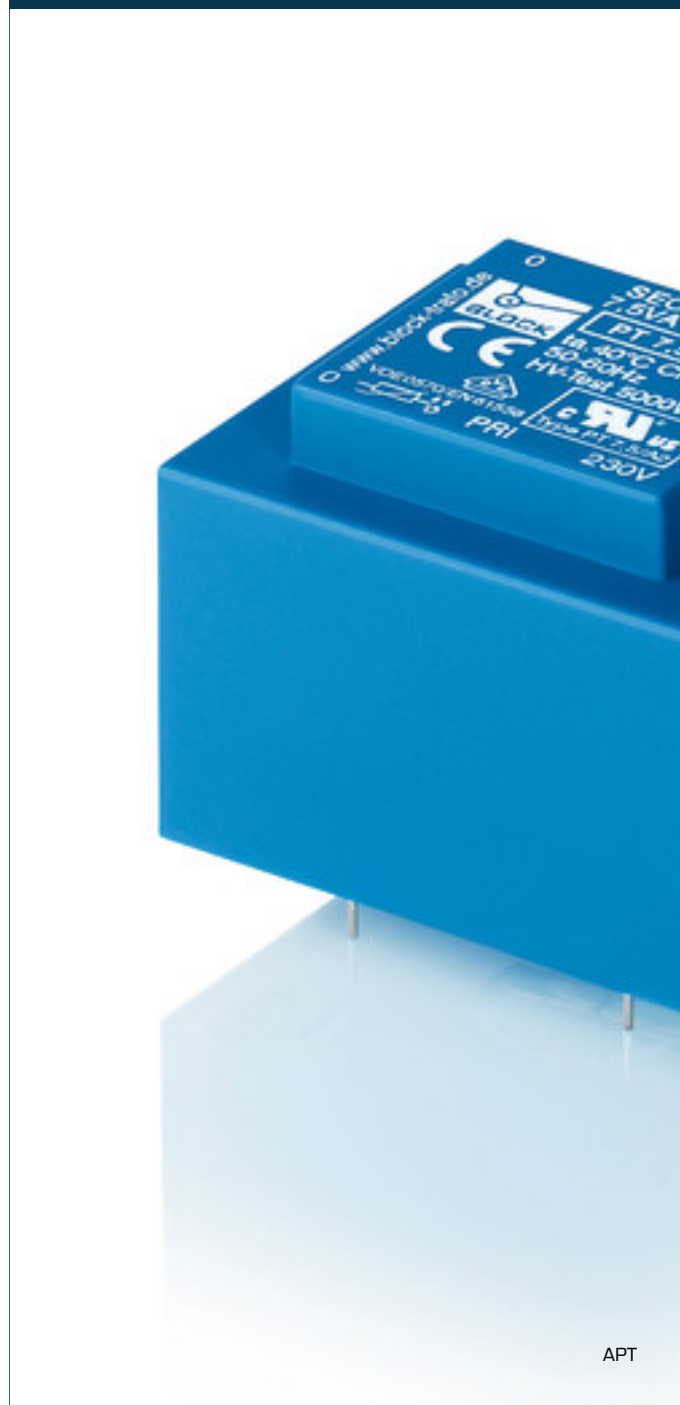


Safety isolating transformer **APT 13/2/15 - no longer available**



Advantages

Minimum size at high output

Integrated overload protection using PTC in the input

Permanent corrosion protection, high insulation value and maximum electrical reliability thanks to XtraDenseFill resin encapsulation

Self-extinguishing potting material

Space saving installation thanks to additional screw mounting in the base plate

Applications

As a safety transformer for the safe electrical isolation of the input and output sides. The transformer is suitable for creating SELV and PELV circuits because of the limit on the output voltage.

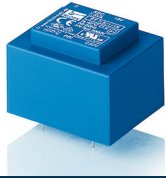
Standards

Safety isolating transformer
to: VDE 0570 Part 2-6, DIN EN 61558-2-6, EN 61558-2-6, IEC 61558-2-6,
UL 5085-1/-2, CSA 22.2 No.66

Approvals



VDE, UL 5085-1/-2, CSA 22.2 No.66



Safety isolating transformer APT 13/2/15 - no longer available

Type	APT 13/2/15 - no longer available
Electrical data	
Input	
Rated input voltage	115 Vac
Rated frequency	50 - 60 Hz
Output	
Rated output voltage	2 x 15 Vac
Rated Power	13 VA
No-load voltage (app. x factor)	1.23
No-load loss (typ.)	1.30 W
Efficiency	73.0 %
Standards	
Classification	Safety isolating transformer
Approvals	
Approvals	cURus, VDE
Environment	
Ambient temperature max.	40 °C
Safety and protection	
Type	Encapsulated
Insulation class	VDE=B, UL=class 105
Protection index	IP 00
Safety class (prepared)	II
Short circuit strength	non-inherently short-circuit proof
Order numbers	
Order Number	APT 13/2/15 - no longer available

Type	APT 13/2/15 - no longer available
Mechanical data	
Terminal and mounting	
Terminals	Pins for printed circuit boards
Measures and weights	
Dimension (W x H x D)	47 x 45 x 56 mm
Pin (ø)	0.8 mm
Core type	EI 54/18,8
Weight	0.42 kg